

FOREST CRANE PALMS 670

SPARE PARTS

1.1 Main parts

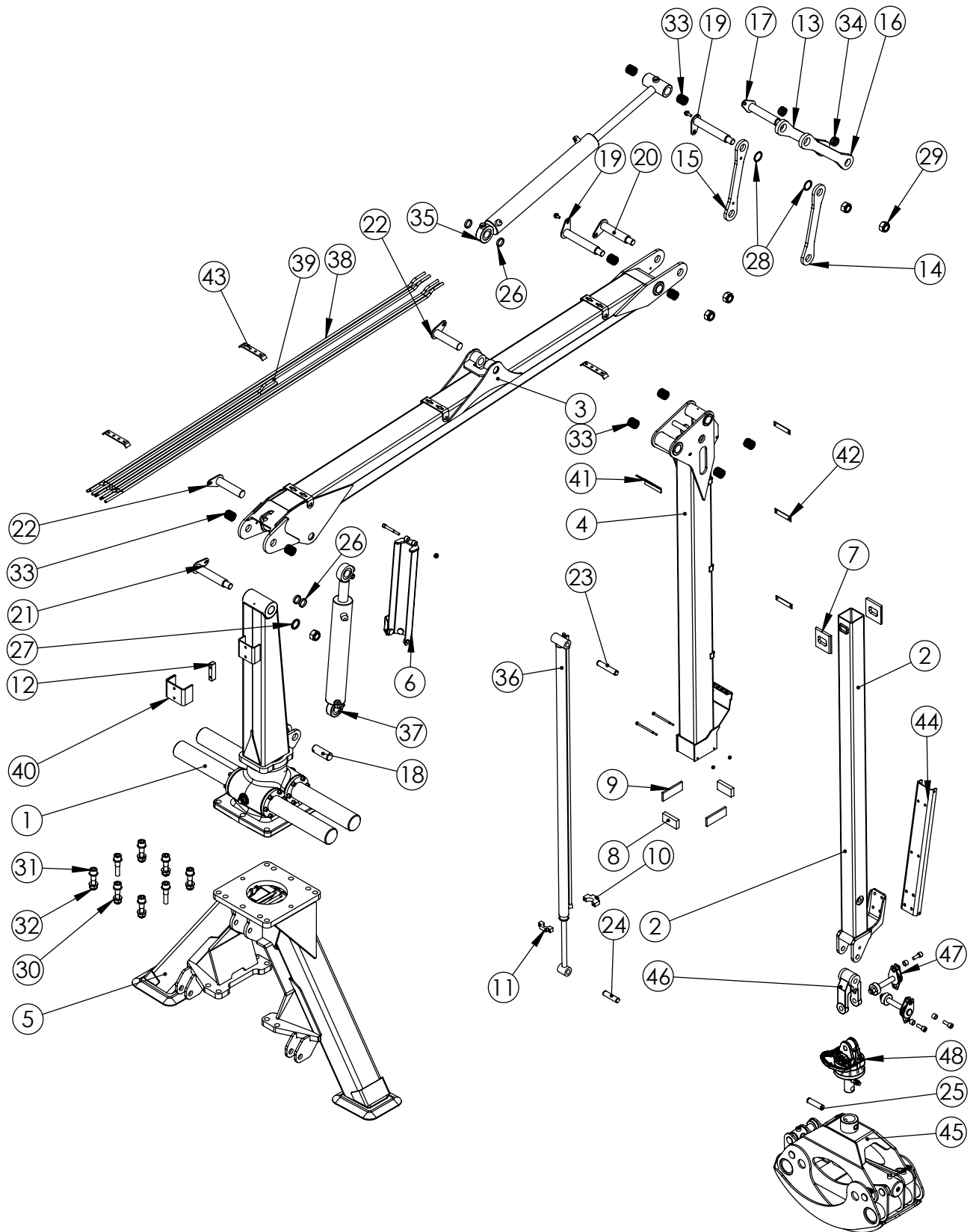


Figure 13. Spare part positions of Palms 3.67 forest crane

Pos	Code	Part name	Qty
1	3-67.t.m.w.p	3.67 slewing mechanism and pillar	1
2	3-67.03.00.00	Telescopic boom	1
3	3-67.01.00.00	Lift boom	1
4	3-67.02.00.00	Jib boom	1
5	AJ2.00.00.00B	A support leg	1
6	670.04.00.00C	Cylinder protection	1
7	840.00.00.PL7	Extension boom slider	2
8	625.06.00.09	Sliding plate	2
9	625.06.00.08	Sliding plate	2
10	670.00.00.04	Support plate for telescopic cylinder	1
11	670.00.00.03	Support plate for telescopic cylinder	1
12	695.00.00.VP1	Guiding plate for hoses	1
13	670.00.00.01	Puller 1	1
14	670.00.00.02P	Puller 2	1
15	670.00.00.02	Puller 3	1
16	670.00.00.01P	Puller 4	1
17	TK-40-192	Shaft	1
18	SA-40-110	Shaft	1
19	TK-40-228	Shaft	2
20	TK-40-178	Shaft	1
21	TK-40-200	Shaft	1
22	T-40-170	Shaft	2
23	LR-25-124	Shaft	1
24	LR-25-91	Shaft	1
25	LR-25-104	Shaft	1
26	40x9d.r	Distance ring	4
27	41x55x4,5d.r	Distance ring	1
28	45x55x3d.r	Distance ring	2
29	M30n	Nut M30 DIN985	5

30	M24w	Washer M24 DIN125	14
31	M24x100b	Inner hex head bolt M24x100 DIN912	8
32	M24n	Nut M24 DIN985	6
33	L11FB0924040	Bronze slide bearing 40- 44x40 WB800	10
34	L11FB0924020	Bronze slide bearing 40- 44x20 WB800	2
35	HC80.40.620B	Extension boom cylinder	1
36	HC 40-25-1600	Telescopic boom cylinder	1
37	HC90-50-465	Lifting cylinder	1
38	3-67.PT1	Rigid pipes on lift boom 1	6
39	670.PT3B	Rigid pipes on lift boom 2	2
40	695.00.00.05B	Hose clamp on pillar	1
41	670.03.00.02	Extension boom's holder for hoses	1
42	625.05.01.02	Clamp	3
43	680.00.00.15	Hose clamp on lift boom	4
44	810.00.00.11C	Holding frame for hoses	1
45	Grapple	Grapple	1
46	CL7325-9025	Link for rotator	1
47	Rotator shaft	Shaft for rotator	2
48	Rotator	30 kN rotator	1

Table 7. Spare part list of Palms 3.67 forest crane

11.2 Slewing mechanism parts

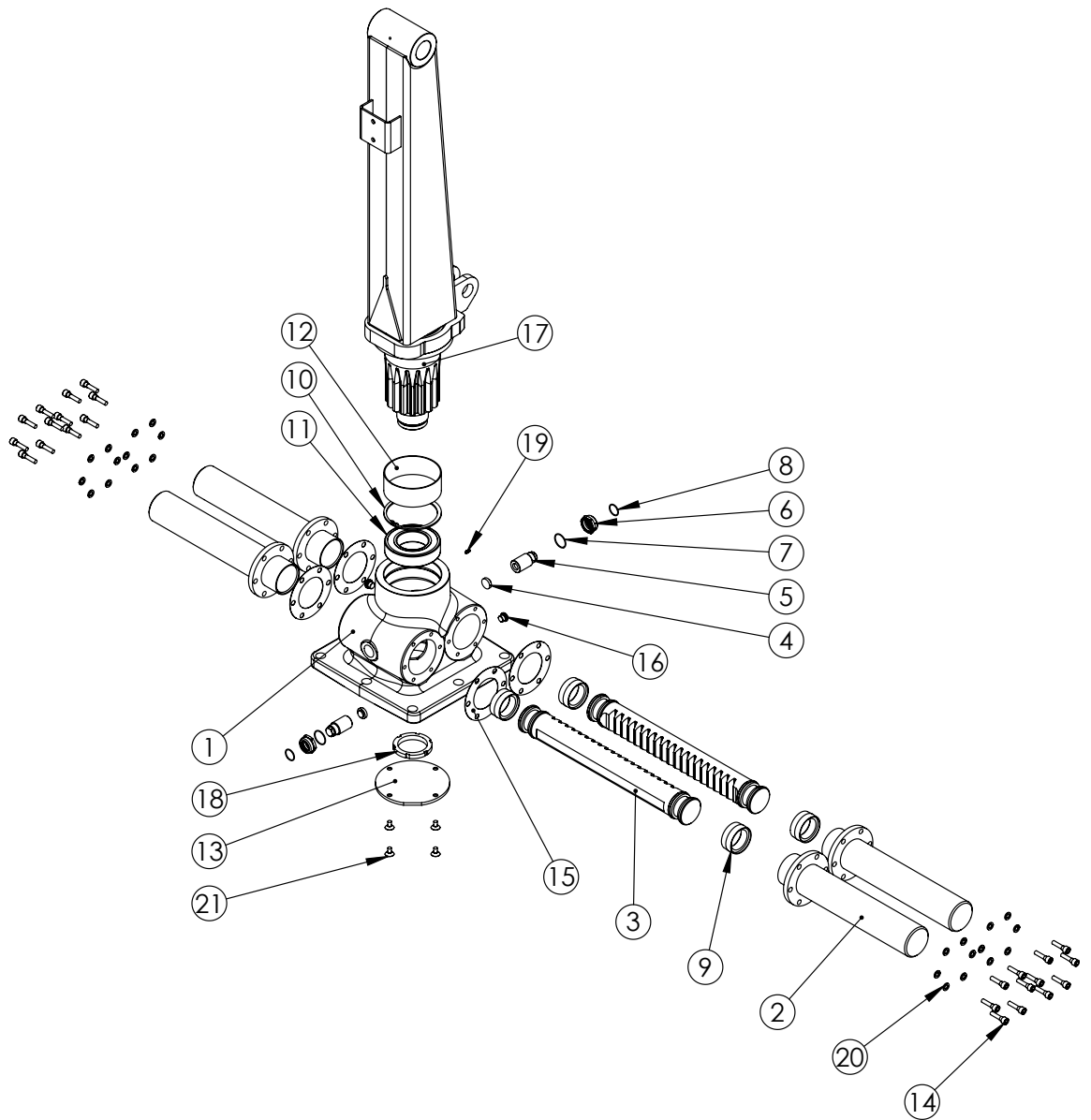


Figure 14. Palms 3.67 slewing mechanism with pillar

Pos	Code	Part name	Qty
1	680.00.01T	Slewing housing	1
2	470.00.00.02B	Hollow 80 x 390 + 55	4
3	470.00.00.05	Gear rack	2
4	700.00.00.08	Support bolt bronze guide	2
5	700.00.00.07	Support bolt	2
6	700.00.00.06	Stopper nut	2

7	o-ring38-2-72	ISC O-ring 38-2 72 NBR 872 445653	2
8	o-ring30-2-72	ISC O-ring 30-2 72 NBR 872 445653 Stopper nut	2
9	03004591	Polypack gasket 80x60x22,4	4
10	150x4s.r	Stopper ring \varnothing 150x4.0 DIN 472	1
11	L1123022CW33	Spherical roller bearing 23022	1
12	L11FBB09215060	Bronze slide bearing 150- 155x60 WL-WB800	1
13	700.00.00.09C	Slewing housing cover	1
14	M12x45b	Inner hex head bolt M12x45 DIN 912	24
15	TIH-6-100	Seal for hollow	4
16	M18x1,5c	M18x1,5 bolt with washer	2
17	3-68.03.00.00	3.67 pillar	1
18	M100x2	Nut M100x2	1
19	M6g.n	M6 grasing nipple	1
20	M12w	Washer M12 DIN127	24
21	M12x20b	Inner hex head bolt M12x20 DIN 912	4

Table 8. *Palms 3.67 slewing mechanism spare parts list*